

Printing Registration Statement from RGST

UI 4.3.2 - Datatel Colleague UI - Production - [ychaunce / production] - Windows Internet Explorer
https://u44b.pittcc.edu:56500/u43production/sl/index.htm

RGST - Registration Statement Print

Print only new

Sort Sequence

Mail Rules for Addnl Copies

Reg User Group

Message Lines

1

2

Saved List Name

Start/End Date

Terms

1

2

Students

1

2

AR Types

1

2

Additional Selection Criteria

Enter in ID#

UI 4.3.2 - Datatel Colleague UI - Production - [ychaunce / production] - Windows Internet Explorer
https://u44b.pittcc.edu:56500/u43production/sl/index.htm

RGST - Registration Statement Print

Print only new

Sort Sequence

Mail Rules for Addnl Copies

Reg User Group

Message Lines

1

2

Saved List Name

Start/End Date

Terms

1

2

Students

1

2

AR Types

1

2

Additional Selection Criteria

F9 & update

Printing Registration Statement from RGST

UI 4.3.2 - Datatel Colleague UI - Production - [ychaunce / production] - Windows Internet Explorer
https://uhib.pittcc.edu/56500/u43production/s/index.htm

ellucian Colleague 48

RGST - Registration Statement Print
Peripheral : SETPTR.ARJ022.29079 Description : Registration Statement Print
Process : RGST Description : Registration Statement Print

Output Device []
Printer []
Form Name []
Banner []
Security [] []
Copies 1
Defer Time []

Other Options
1 NOEJECT []
2 NFMT []
3 []

Page Width 132
Page Length 60
Top Margin 3
Bottom Margin 3
Max Pages per PDF []

Enter in the printer name (refer to “Printer Designations & Locations” document)

UI 4.3.2 - Datatel Colleague UI - Production - [ychaunce / production] - Windows Internet Explorer
https://uhib.pittcc.edu/56500/u43production/s/index.htm

ellucian Colleague 48

SCHD - Student Schedule Print
Peripheral : SETPTR.ACJ004.29079 Description : Student Schedule
Process : SCHD Description : Student Schedule

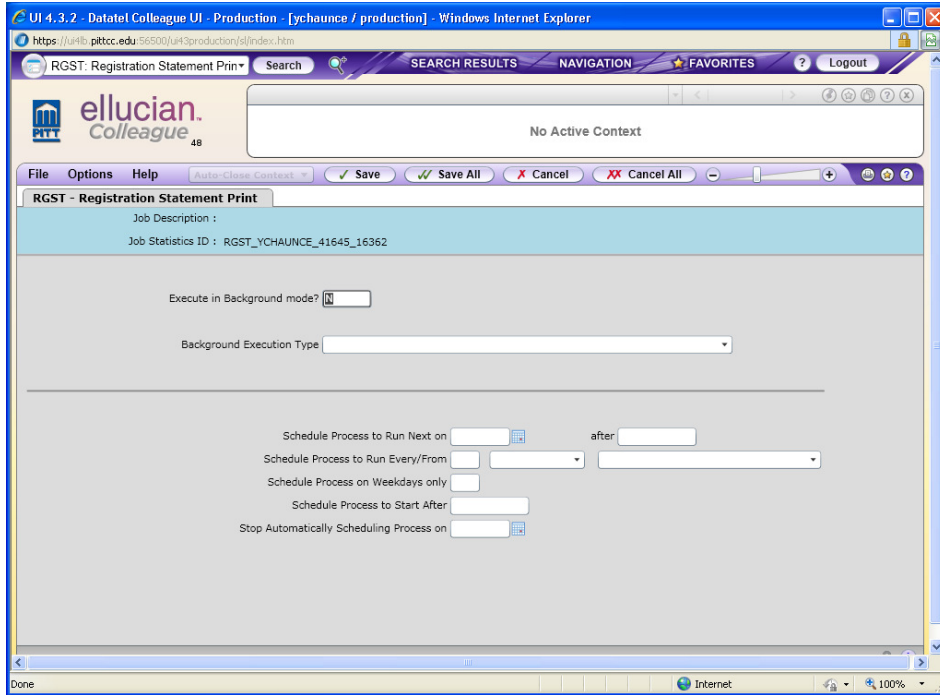
Output Device P Printer Spooler []
Printer lprg5 []
Form Name []
Banner []
Security [] []
Copies 1
Defer Time []

Other Options
1 NOEJECT []
2 NFMT []
3 []

Page Width 132
Page Length 60
Top Margin 3
Bottom Margin 3
Max Pages per PDF []

F9 & update

Printing Registration Statement from RGST



F9 & Update

Processes and prints to printer